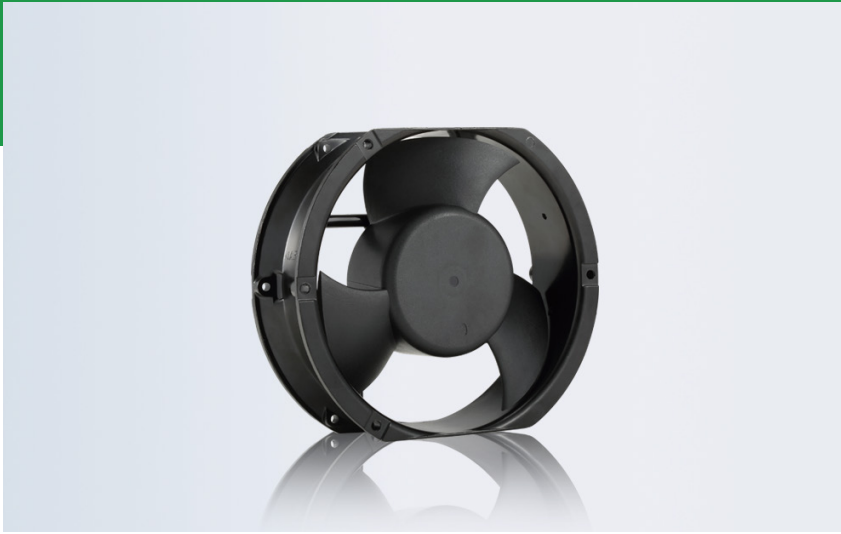


RA-EC17251A

EC FAN



CFM 260
172*150*51mm

Frame/Blade

- Frame:PBT
- Blade:PBT

Features

- Power Supply:110/220VAC 50/60Hz Customizable
- Rotation:anticlockwise when facing label
- Operating:Continuous
- Bearings:Ball/oil/Sleeve
- Connection Method:AWG24 specification wire
- Insulation Class:Class B
- Motor:RUIAPPLE Brushless (BLDC)
- Insulation Resistance:10M/500V DC
- Voltage Strength:2 minutes/500AVC - 5mA
- Humidity Range:RH 20% - RH 75%
- Storage Temperature:- 20°C to +75°C
- Operating Temperature:-10°C to +70°
- Maximum:50,000hours

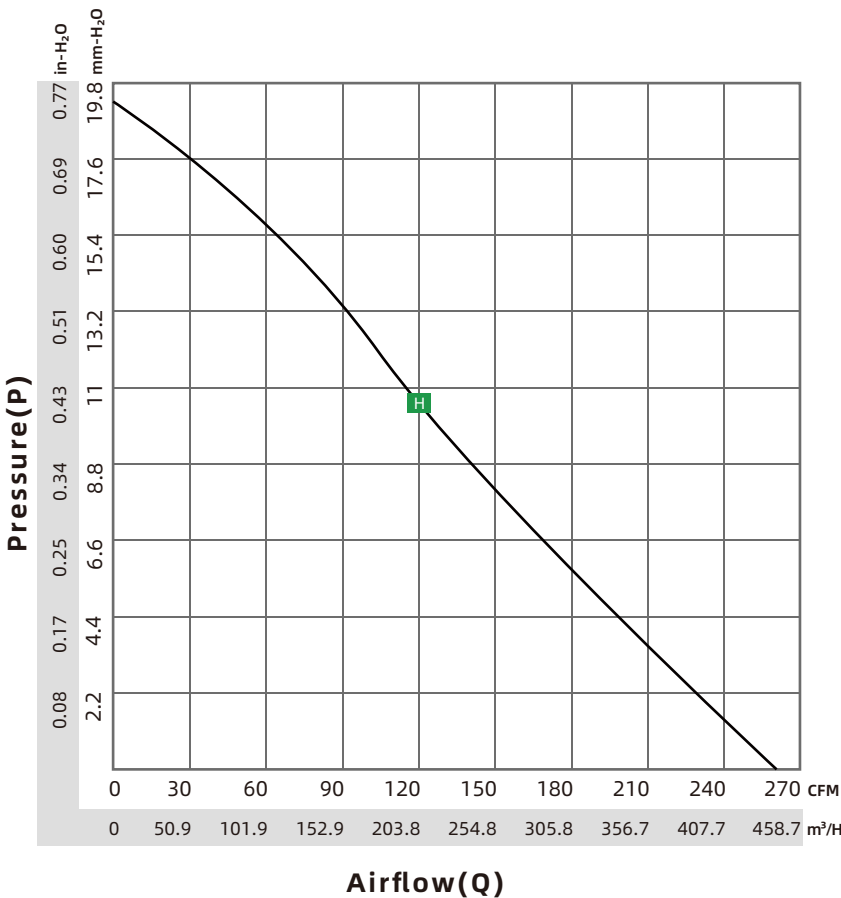
Certification



Options

- Maximum IP: 68
- Lock (stall) protection

Brand	RUIAPPLE/瑞安普
English	https://www.ruiapple-fan.com/Ec-Fans/EC-17251A.html
Chinese	https://www.ruiapple-fan.cn/Ec-Fans/EC-17251A.html



RA-EC17251A

Model	P-Q	Voltage	Current	Power	Speed	Noise	Air Flow	Air Flow	Pressure
Model	P-Q Curve	V	A	W	RPM	dBA	CFM	M ³ /H	mm-H ₂ O
RA-EC17251A Hx220	H	220	0.17	21.00	3600	60	260.00	441.74	19.00

Model, (x) represents that the bearing is either a ball bearing (B) or Sleeve bearing (S), depending on customer requirements.
 For any customized design requirements for the mentioned products, please contact Ruiapple sales.
 For the latest product information, refer to announcements on the official Ruiapple website at www.ruiapple-fan.com.

Drawing

