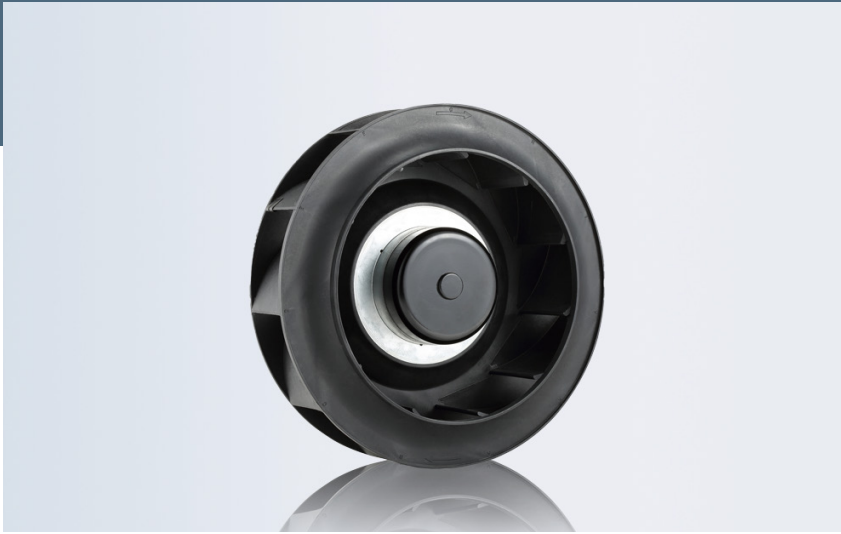


# RA-DCC250

## DC CENTRIFUGAL



**CFM 393~490**  
**250\*100mm**

### Frame/Blade

- Frame:PBT
- Blade:PBT

### Features

- Power Supply:12/24V Customizable
- Rotation:anticlockwise when facing label
- Operating:Continuous
- Bearings:Ball/oil/Sleeve
- Connection Method:AWG24 specification wire
- Insulation Class:Class B
- Motor:RUIAPPLE Brushless (BLDC)
- Insulation Resistance:10M/500V DC
- Voltage Strength:2 minutes/500AVC - 5mA
- Humidity Range:RH 20% - RH 75%
- Storage Temperature:- 20°C to +75°C
- Operating Temperature:-10°C to +70°
- Maximum:50,000hours

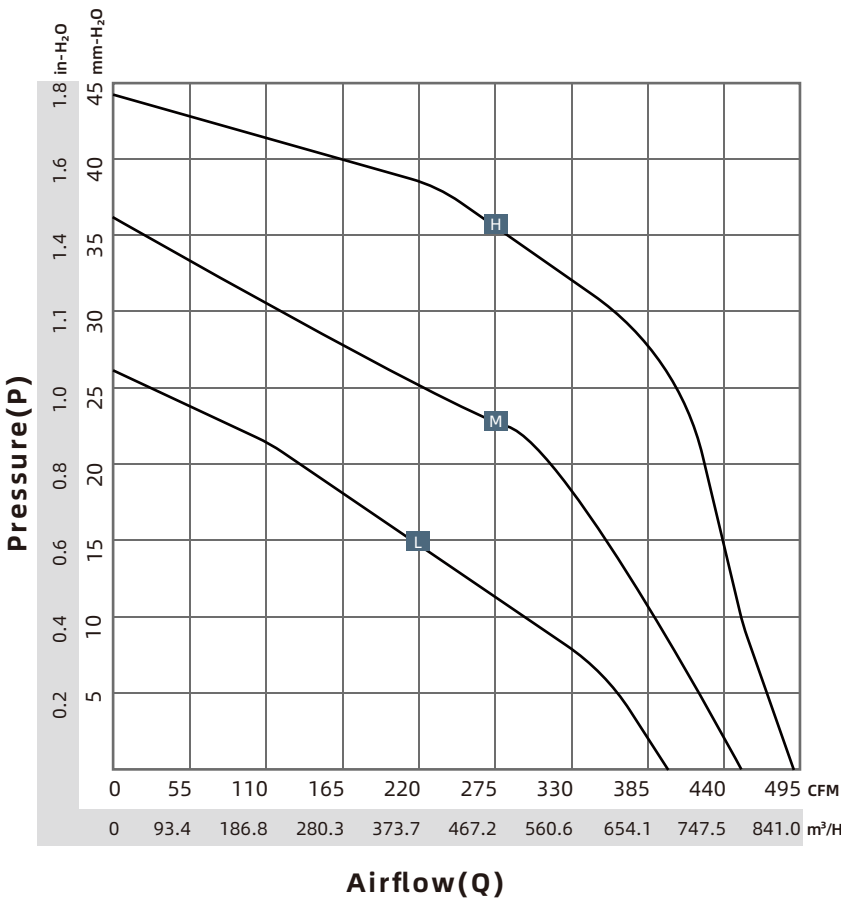
### Certification



### Options

- PWM speed control
- Voltage speed control
- Intermittent operation
- Temperature start/stop
- Speed limit alarm
- Closed-Loop
- Maximum IP: 68
- Constant Power
- Reverse protection
- Soft/Delayed start
- Lock (stall) protection
- Intermittent Start
- Normal/Fault alarm
- Feedback Signal
- Explosion Proof

Brand	RUIAPPLE/瑞安普
English	<a href="https://www.ruiapple-fan.com/Back-Curve-Centrifugal-Fans/DCC-250.html">https://www.ruiapple-fan.com/Back-Curve-Centrifugal-Fans/DCC-250.html</a>
Chinese	<a href="https://www.ruiapple-fan.cn/Back-Curve-Centrifugal-Fans/DCC-250.html">https://www.ruiapple-fan.cn/Back-Curve-Centrifugal-Fans/DCC-250.html</a>



# RA-DCC250

Model	P-Q	Voltage	Current	Power	Speed	Noise	Air Flow	Air Flow	Pressure
No.	P-Q Curve	V	A	W	RPM	dBA	CFM	M <sup>3</sup> /H	mm-H <sub>2</sub> O
RA-DCC250Lx24	L	24	1.20	28.80	1700	62	393.00	667.71	26.00
RA-DCC250Mx24	M	24	2.00	48.00	2000	67	457.00	776.44	36.00
RA-DCC250Hx24	H	24	2.65	63.60	2200	69	490.00	832.51	44.00

Model, (x) represents that the bearing is either a ball bearing (B) or Sleeve bearing (S), depending on customer requirements. For any customized design requirements for the mentioned products, please contact Ruiapple sales. For the latest product information, refer to announcements on the official Ruiapple website at [www.ruiapple-fan.com](http://www.ruiapple-fan.com).

## Drawing

