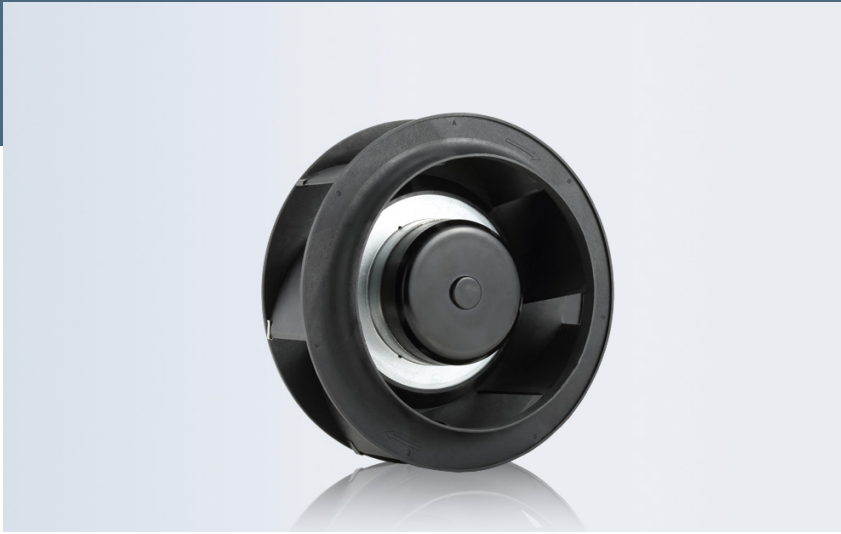


# RA-DCC175

## DC CENTRIFUGAL



**CFM 266~404**  
**175\*69mm**

### Frame/Blade

- Frame:PBT
- Blade:PBT

### Features

- Power Supply:12/24V Customizable
- Rotation:anticlockwise when facing label
- Operating:Continuous
- Bearings:Ball/oil/Sleeve
- Connection Method:AWG24 specification wire
- Insulation Class:Class B
- Motor:RUIAPPLE Brushless (BLDC)
- Insulation Resistance:10M/500V DC
- Voltage Strength:2 minutes/500AVC - 5mA
- Humidity Range:RH 20% - RH 75%
- Storage Temperature:- 20°C to +75°C
- Operating Temperature:-10°C to +70°
- Maximum:50,000hours

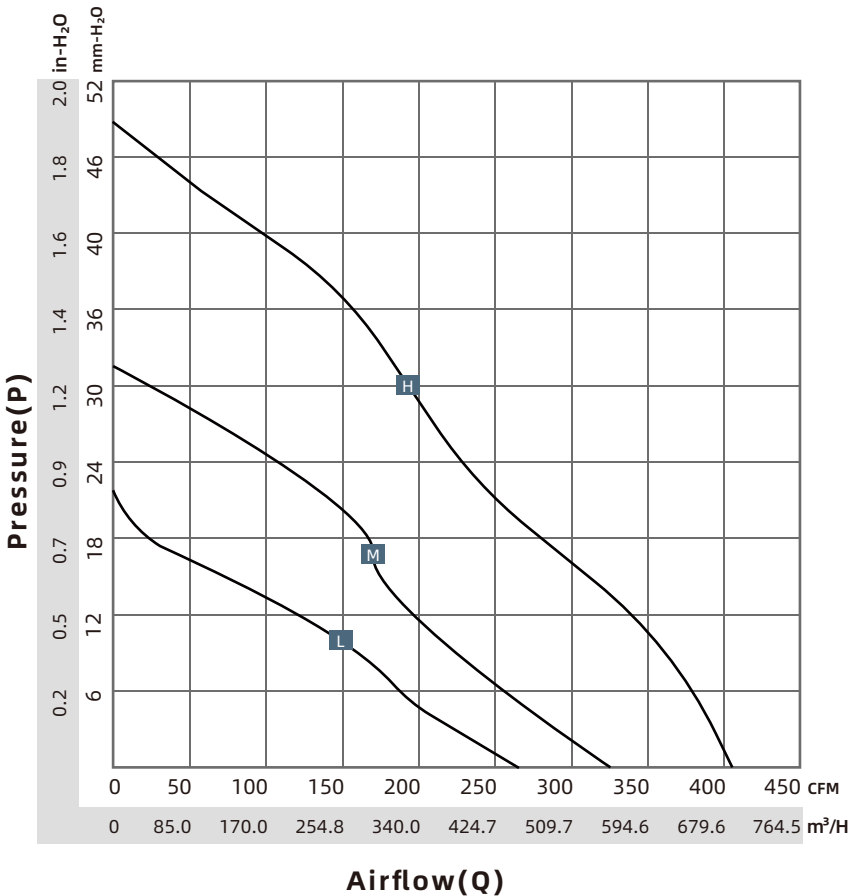
### Certification



### Options

- PWM speed control
- Voltage speed control
- Intermittent operation
- Temperature start/stop
- Speed limit alarm
- Closed-Loop
- Maximum IP: 68
- Constant Power
- Reverse protection
- Soft/Delayed start
- Lock (stall) protection
- Intermittent Start
- Normal/Fault alarm
- Feedback Signal
- Explosion Proof

Brand	RUIAPPLE/瑞安普
English	<a href="https://www.ruiapple-fan.com/Back-Curve-Centrifugal-Fans/DCC-175.html">https://www.ruiapple-fan.com/Back-Curve-Centrifugal-Fans/DCC-175.html</a>
Chinese	<a href="https://www.ruiapple-fan.cn/Back-Curve-Centrifugal-Fans/DCC-175.html">https://www.ruiapple-fan.cn/Back-Curve-Centrifugal-Fans/DCC-175.html</a>



# RA-DCC175

Model No.	P-Q Curve	Voltage V	Current A	Power W	Speed RPM	Noise dBA	Air Flow CFM	Air Flow M <sup>3</sup> /H	Pressure mm-H <sub>2</sub> O
RA-DCC175Lx24	L	24	0.76	18.24	2300	60	266.00	451.93	21.00
RA-DCC175Mx24	M	24	1.35	32.40	2950	67	333.00	565.77	32.00
RA-DCC175Hx24	H	24	2.30	55.20	3500	71	404.00	686.40	49.00

Model, (x) represents that the bearing is either a ball bearing (B) or Sleeve bearing (S), depending on customer requirements. For any customized design requirements for the mentioned products, please contact Ruiapple sales. For the latest product information, refer to announcements on the official Ruiapple website at [www.ruiapple-fan.com](http://www.ruiapple-fan.com).

## Drawing

