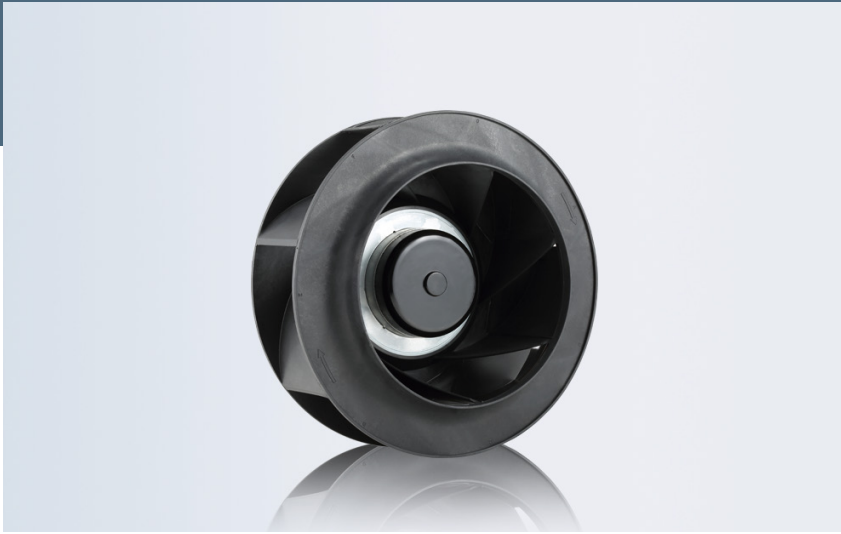


RA-DCC225

DC CENTRIFUGAL



CFM 462~632
225*100mm

Frame/Blade

- Frame:PBT
- Blade:PBT

Features

- Power Supply:12/24V Customizable
- Rotation:anticlockwise when facing label
- Operating:Continuous
- Bearings:Ball/oil/Sleeve
- Connection Method:AWG24 specification wire
- Insulation Class:Class B
- Motor:RUIAPPLE Brushless (BLDC)
- Insulation Resistance:10M/500V DC
- Voltage Strength:2 minutes/500AVC - 5mA
- Humidity Range:RH 20% - RH 75%
- Storage Temperature:- 20°C to +75°C
- Operating Temperature:-10°C to +70°
- Maximum:50,000hours

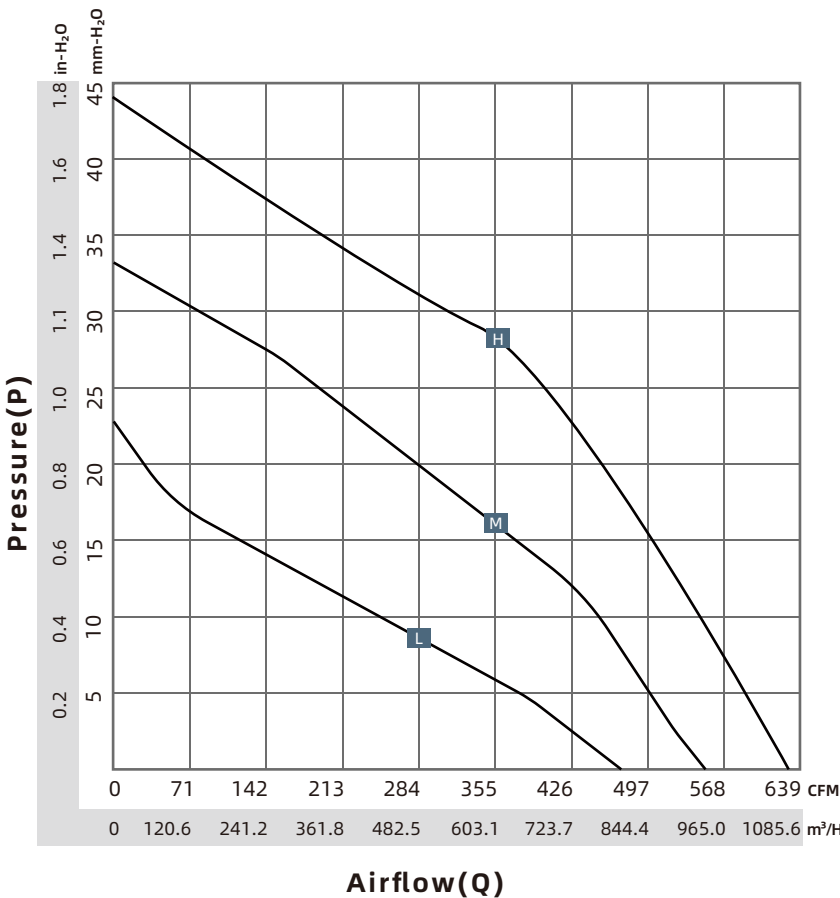
Certification



Options

- PWM speed control
- Voltage speed control
- Intermittent operation
- Temperature start/stop
- Speed limit alarm
- Closed-Loop
- Maximum IP: 68
- Constant Power
- Reverse protection
- Soft/Delayed start
- Lock (stall) protection
- Intermittent Start
- Normal/Fault alarm
- Feedback Signal
- Explosion Proof

Brand	RUIAPPLE/瑞安普
English	https://www.ruiapple-fan.com/Back-Curve-Centrifugal-Fans/DCC-225.html
Chinese	https://www.ruiapple-fan.cn/Back-Curve-Centrifugal-Fans/DCC-225.html



RA-DCC225

Model	P-Q	Voltage	Current	Power	Speed	Noise	Air Flow	Air Flow	Pressure
No.	P-Q Curve	V	A	W	RPM	dBA	CFM	M ³ /H	mm-H ₂ O
RA-DCC225Lx24	L	24	1.00	24.00	1700	60	462.00	784.94	22.50
RA-DCC225Mx24	M	24	1.70	40.80	2000	65	557.00	946.34	33.00
RA-DCC225Hx24	H	24	2.55	61.20	2300	69	632.00	1073.77	44.00

Model, (x) represents that the bearing is either a ball bearing (B) or Sleeve bearing (S), depending on customer requirements.
 For any customized design requirements for the mentioned products, please contact Ruiapple sales.
 For the latest product information, refer to announcements on the official Ruiapple website at www.ruiapple-fan.com.

Drawing

