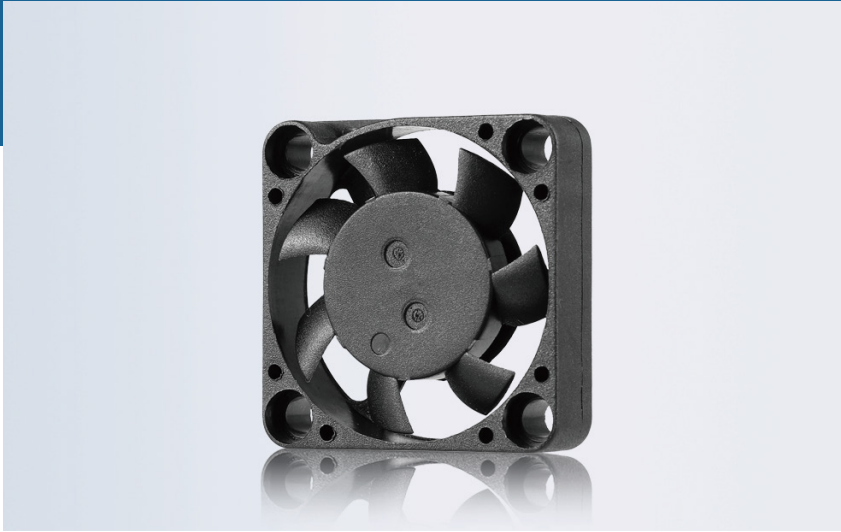


RA-DC3007

DC BRUSHLESS AXIAL FAN



CFM 1.88 ~ 3.92
30*30*7mm

Frame/Blade

- Frame:PBT
- Blade:PBT

Features

- Power Supply:5/12/24V Customizable
- Rotation:Clockwise when facing label
- Operating:Continuous
- Bearings:Ball/oil/Sleeve
- Connection Method:AWG24 specification wire
- Insulation Class:Class B
- Motor:RUIAPPLE Brushless (BLDC)
- Insulation Resistance:10M/500V DC
- Voltage Strength:2 minutes/500AVC - 5mA
- Humidity Range:RH 20% - RH 75%
- Storage Temperature:- 20°C to +75°C
- Operating Temperature:-10°C to +70°
- Maximum:50,000hours

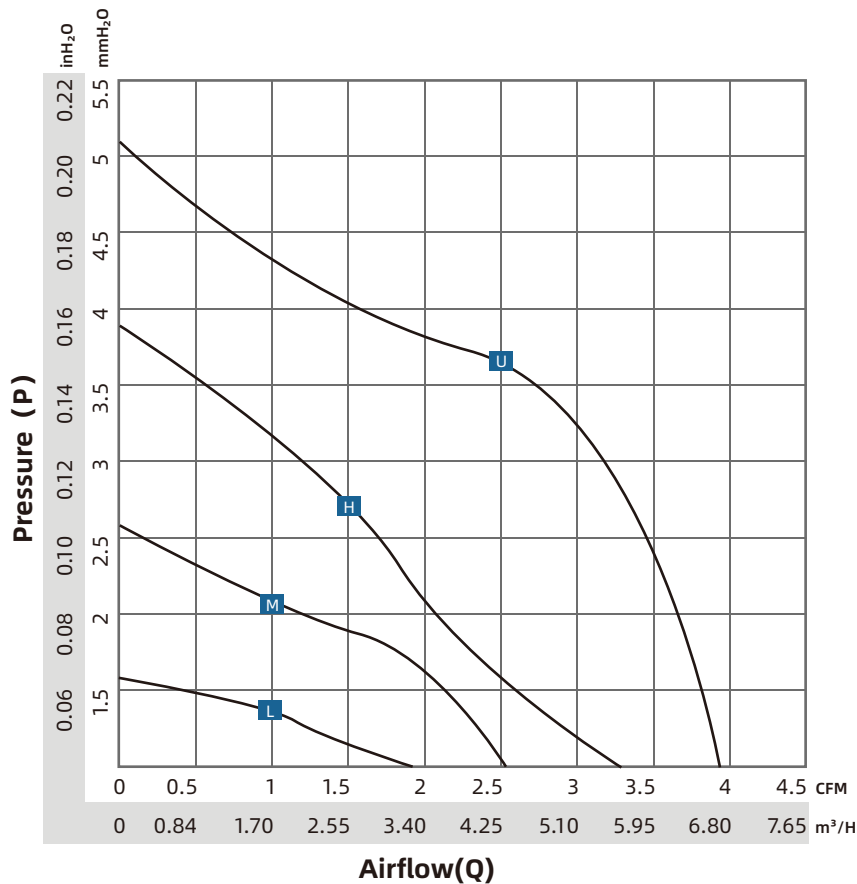
Certification



Options

- Normal/Fault alarm
- Closed-Loop
- Intermittent operation
- PWM speed control
- Lock (stall) protection
- Moisture Protection
- Connector add
- Soft/Delayed start
- Speed limit alarm
- Temperature start/stop
- Voltage speed control
- Reverse protection
- Maximum IP: 67

Brand	RUIAPPLE/瑞安普
English	https://www.ruiapple-fan.com/DC-axial-fans/DC-3007.html
Chinese	https://www.ruiapple-fan.cn/DC-axial-fans/DC-3007.html



RA-DC3007

Model	P-Q	Voltage	Current	Power	Speed	Noise	Air Flow	Air Flow	Pressure
No.	P-Q Curve	V	A	W	RPM	dBA	CFM	M ³ /H	mm-H ₂ O
RA-DC3007Lx5	L	5	0.10	0.50	6000	21.1	1.88	3.00	1.52
RA-DC3007Lx12		12	0.05	0.60	6000				
RA-DC3007Mx5	M	5	0.14	0.70	8000	25.8	2.53	4.20	2.54
RA-DC3007Mx12		12	0.07	0.84	8000				
RA-DC3007Hx5	H	5	0.18	0.90	10000	30.6	3.29	5.40	3.81
RA-DC3007Hx12		12	0.09	1.08	10000				
RA-DC3007Ux5	U	5	0.28	1.40	12000	34.5	3.92	6.60	5.08
RA-DC3007Ux12		12	0.12	1.44	12000				

Model, (x) represents that the bearing is either a ball bearing (B) or Sleeve bearing (S), depending on customer requirements. For any customized design requirements for the mentioned products, please contact Ruiapple sales. For the latest product information, refer to announcements on the official Ruiapple website at www.ruiapple-fan.com.

Drawing

